



Patient information “smile distractor”

A week after surgery, a follow-up consultation is scheduled.

The distractor is activated twice a day by turning from one colour to a new one. 1/3 of a complete rotation twice a day corresponds to a 0.6mm opening per day.

During this expansion period, it is important that:

- the distractor is under tension at all times.
- the split between the two frontal teeth grows slightly larger every day.

The patient key is brought over the mid-section of the distractor module and then turned downwards. Your surgeon or orthodontist will show you how to do this initially with a mirror.

Consequently, we can expect an opening of at least 6mm between the two front teeth after 10 days.

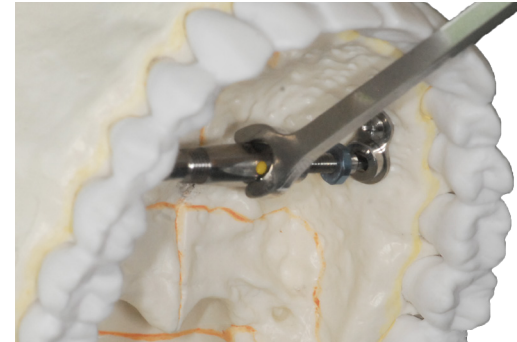
In order to estimate the expansion correctly, you must go for a consultation once or twice. Usually, this will be over a period of one to three weeks.

Once the proposed expansion has been achieved, the doctor will block the distractor. The distractor will no longer be able to open or close.

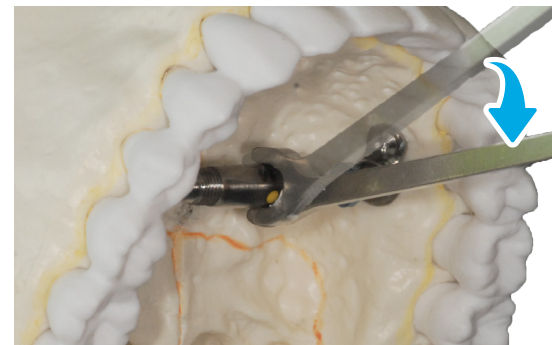
The distractor must remain fixed and without movement in the mouth for a period of 3 to 6 months. Sometimes, the distractor can loosen slightly during this period. Feel free to visit the doctor so that the distractor can be tightened again.

Clean the distractor daily with a soft children’s toothbrush.

Activation



Push the key over the mid-section of the distractor and push down.



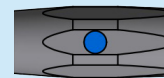
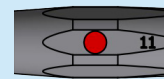
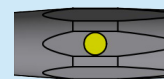
Turn a third of a rotation until the next colour appears. Do this twice daily.



Smile distractor in use.



Smile distractor in use.



“Giving the people a nice smile.”

