

IMF-System

Screws for InterMaxillary Fixation

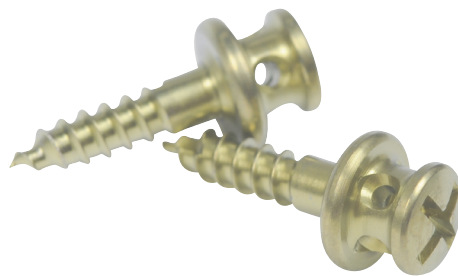


Table of content

I. Introduction	4
II. Features	5
III. Product information	6

IMF Screws

I. Introduction



INDICATIONS

The binding of the maxillary and mandibular teeth together to immobilise the jaw in patients with a mandibular fracture or during orthognatic surgery.

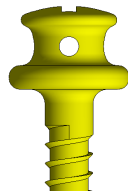


PRINCIPLES

1. Simple and efficient
2. Compatibility
3. Small in all dimensions
4. Two different types of screwheads

TYPES

Type 1 with holes



- Screwhead with 4 holes
- Titanium Alloy
- Lengths 8, 10 and 12 mm

Type 2 without holes



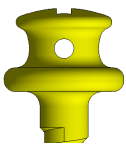
- Small head without holes
- Titanium Alloy
- Lengths 8, 10 and 12 mm

IMF Screws

II. Features



Type 1 with holes



- 4 Rounded holes for easy and fast wire insertion
- Flat plateau under screwhead to prevent elastics to move
- Cross-pin slot for easy pickup and insertion
- High neck for a strong fixation
- Smooth neck for protection of the soft tissue

Type 2 without holes



- A very small head without holes for less invasion
- Flat plateau under screwhead to prevent elastics to move
- Cross-pin slot for easy pickup
- High neck for a strong fixation
- Smooth neck for protection of the soft tissue

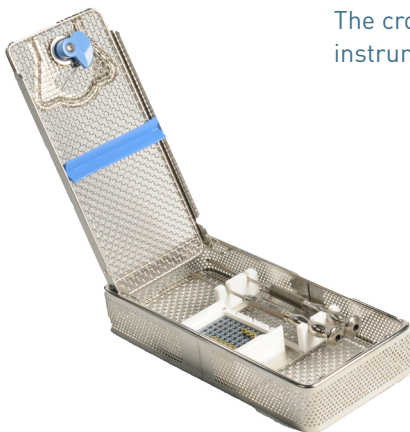


- Selfdrilling tip for easy placement
- Excellent fixation

SCREWHEAD

SELFDRILLING TIP

BOX



The cross-pin screwhead is compatible with the existing instruments of the Titamed Gamma System



IMF Screws

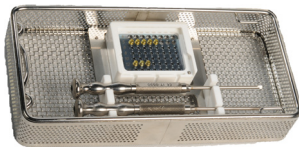
III. Product information



INSTRUMENTS



IT0530



IT3008

Cat. No.	Description
IT0530	Screwdriver Cross-Pin 2.0 and 2.3
IT3008	Inox container IMF
IT135005	Twist drill 1.3mm - Stop 5 mm

IMF SCREWS



Cat. No.	Description	
S20-90-008	Cross-pin IMF bonescrew, selfdrilling	with holes
S20-90-010	Cross-pin IMF bonescrew, selfdrilling	with holes
S20-90-012	Cross-pin IMF bonescrew, selfdrilling	with holes



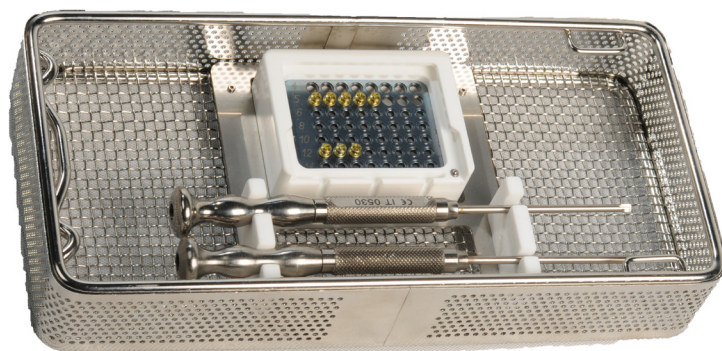
Cat. No.	Description	
S20-91-008	Cross-pin IMF bonescrew, selfdrilling	small head, without holes
S20-91-010	Cross-pin IMF bonescrew, selfdrilling	small head, without holes
S20-91-012	Cross-pin IMF bonescrew, selfdrilling	small head, without holes

IMF Screws

III. Product information



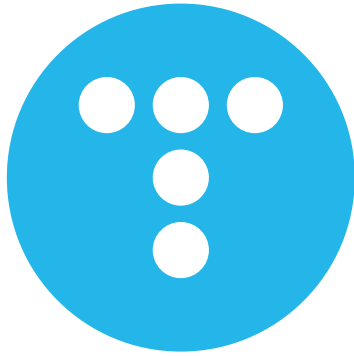
BOX CONTENT



IT3008

IT3008	Cat. No.	Description	Max. quantity
↘	IT0530	Screwdriver Cross-Pin 2.0 and 2.3	2
↘	IT135005	Twist drill 1.3mm - Stop 5 mm	2
↘	S20-90-008	Cross-pin IMF bonescrew, selfdrilling	8
↘	S20-90-010	Cross-pin IMF bonescrew, selfdrilling	8
↘	S20-90-012	Cross-pin IMF bonescrew, selfdrilling	8
↘	S20-91-008	Cross-pin IMF bonescrew, selfdrilling	8
↘	S20-91-010	Cross-pin IMF bonescrew, selfdrilling	8
↘	S20-91-012	Cross-pin IMF bonescrew, selfdrilling	8





Headquarters:

Titamed
Mechelsesteenweg 315 G
2550 Kontich
Belgium

tel: +32 (0)3 289 51 56
email: info@titamed.be
website: www.titamed.com



G1317