

UNI-Smile Distractor

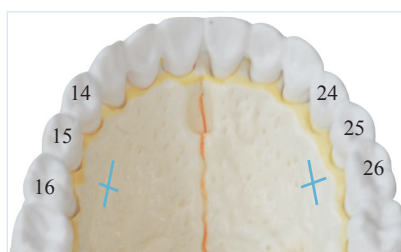
Surgical procedure

Sequence of the surgery

1. **Corticotomies:** lateral + midline (+ posterior disjunction)
2. **Placement** of the UNI-Smile Distractor with self-drilling screws between teeth n° (14)-15-16 and (24)-25-26

SP-022 Rev. C

INCISION



A cross palatal incision or an L-incision, between premolar and molar or between premolars has shown to be the ideal location. The incision is made 1 cm downwards as indicated on the picture.

The correct distractor module size can be measured bone to bone with the fitting models (IT0400).

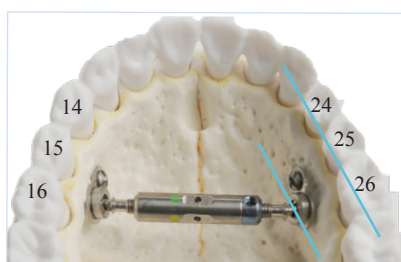


IT0400

In order to avoid losing potential expansion space, it is recommended to apply the biggest module size possible.

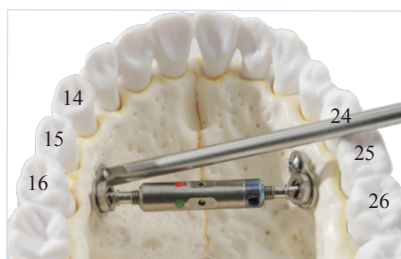
PLACEMENT

Blue mark ALWAYS to the left!



The abutment plates are placed horizontally. The blue side is intended for the left side of the patient.

At the time of the placement, the wings of the distractor need to be completely and equally screwed in/out, in order to avoid losing potential expansion space



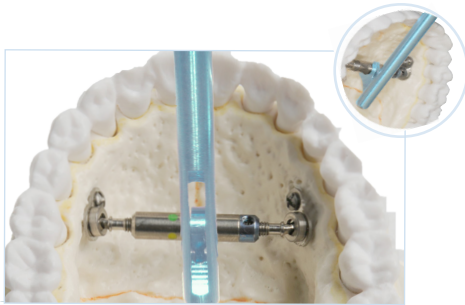
The Smile Distractor must be fixed to the palatal bone with a self-drilling screw on each side (DSSA06 or DSSA07 - screwdriver IT0315).



IT0315

UNI-Smile Distractor

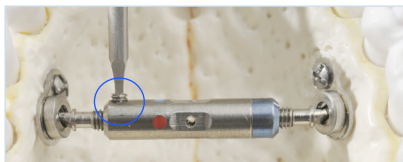
Surgical procedure



The surgeon must activate the Smile Distractor until the two front teeth have an opening of ± 1 mm. To do this, place the key instrument (IT0314) over the middle part of the distractor body and turn from the front to the back.



IT0314



The blocking screw (D002) is placed in one of the two available threaded holes with the screwdriver (IT0128). Place the blocking screw perpendicular over the cylinder, with a clear view of the screw hole. The blocking screw should be fixed real firm, using wrist force.



IT0128

ACTIVATION

BLOCKING SCREW

Keep in mind:

1. The wings of the distractor can be turned completely loose of the distractor module. There is no automatic stop.
2. A minimum palatal distance of 21,5 mm is necessary to place the smallest UNI-Smile Distractor.

Sequence of the distraction

1. **Surgery:** see above
2. **Activation period:** One week after the surgery the activation of the Smile Distractor is started. Remove the blocking screw and expand until bone resistance is felt, then turn once or twice more. During the activation period (1 to 2 weeks) the patient should turn two times a day a quarter of a turn; this is about 0.5 mm opening per day. At each quarter of a turn a new colour appears.
3. **Consolidation period:** After the activation period put the blocking screw back real firm, using wrist force. Place a tampon in case the blocking screw should drop. The distractor needs to stay in place 3 to 6 months.

Tip: Patient information available on www.titamed.com.

