

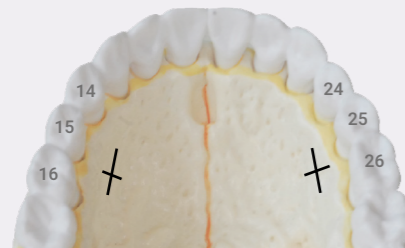
## UNI-Smile Distractor

# Surgical procedure

### Sequence of the surgery

1. **Corticotomies:** Lateral, midline, and (if necessary) posterior disjunction.
2. **Placement of the UNI-Smile Distractor:** Fixed with self-drilling screws between teeth (14)-15-16 and (24)-25-26.

SP-022 Rev. D



#### INCISION

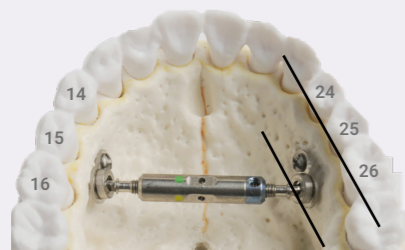
A **cross-palatal incision** or **L-incision** is recommended, placed between the premolar and molar or between the premolars. The incision should be made **1 cm downward**, as illustrated.

The correct distractor module size can be measured bone to bone with the **fitting models IT0400**.

To maximize potential expansion space, it is advised to **use the largest possible module size**.



**Blue mark ALWAYS to the left!**

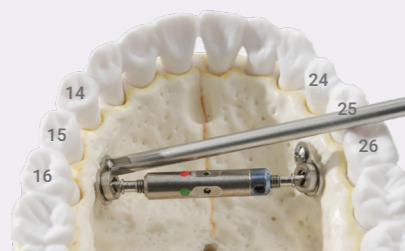


#### PLACEMENT

The abutment plates must be placed horizontally, with the **blue side always on the left**.

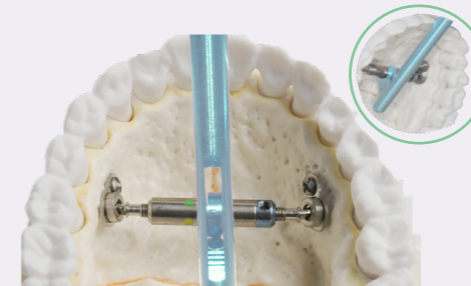
Ensure the wings of the distractor are completely and evenly screwed in to avoid losing expansion space.

The Smile Distractor is secured with self-drilling screws **DSSA06** or **DSSA07** using screwdriver **IT0315**.



## UNI-Smile Distractor

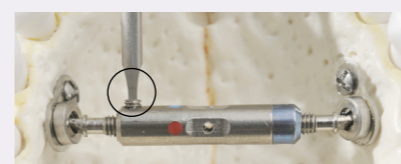
# Surgical procedure



#### ACTIVATION

The surgeon activates the Smile Distractor until an **opening of ~1 mm** appears between the front teeth.

Use key instrument **IT0314** to turn the distractor from front to back.



#### BLOCKING SCREW

The blocking screw **D002** is inserted into one of the two threaded holes using screwdriver **IT0128**.

The blocking wherscrew must be **firmly fixed** using wrist force.



#### KEEP IN MIND

1. The wings of the distractor can be turned completely loose of the distractor module. There is no automatic stop.
2. A minimum palatal distance of 21,5 mm is necessary to place the smallest UNI-Smile Distractor.

### Sequence of the distraction

1. **Surgery:** (as outlined above)
2. **Activation period:** Begins **one week post-surgery**. Remove the blocking screw and expand until resistance is felt, then turn once or twice more.
  - During activation (1-2 weeks), patients should turn the device **twice daily, 1/4 turn per time (~0.5 mm/day)**.
  - With each turn, a new color appears.
3. **Consolidation period:** Once the desired expansion is achieved, reinsert the **blocking screw firmly**. The distractor must remain in place for **3 to 6 months**.

Tip: Our patient information can be found on our website [www.titamed.com](http://www.titamed.com).

SP-022 Rev. D