

Smile EXTRA Distractor

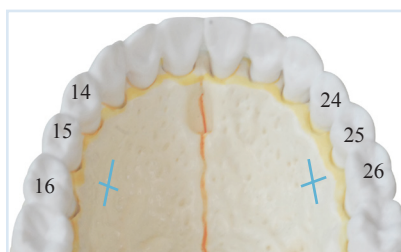
Surgical procedure

Sequence of the surgery

1. **Corticotomies:** lateral + midline (+ posterior disjunction)
2. **Placement** of the UNI-Smile Distractor with self-drilling screws between teeth n° (14)-15-16 and (24)-25-26

SP-023 Rev. C

INCISION



A cross palatal incision or an L-incision, between premolar and molar or between premolars has shown to be the ideal location. The incision is made 1 cm downwards as indicated on the picture.

The correct distractor module can be measured bone to bone with the fitting models (IT0440).

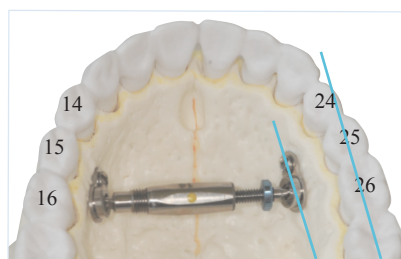


IT0440

In order to avoid losing potential expansion space, it is recommended to apply the biggest module size possible.

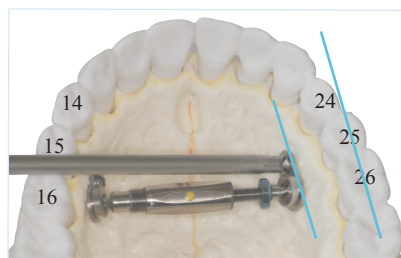
PLACEMENT

Blue blocking nut ALWAYS to the left!



The abutment plates are placed horizontally. The blocking nut (blue side) is intended for the left side of the patient.

At the time of the placement, the wings of the distractor need to be completely and equally screwed in/out, in order to avoid losing potential expansion space and not disrupt the good functioning of the automatic stop of the distractor.



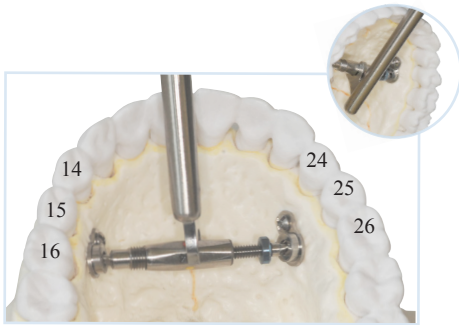
The Smile Distractor must be fixed to the palatal bone with a self-drilling screw on each side (DSSA06 or DSSA07 - screwdriver IT0315).



IT0315

Smile EXTRA Distractor

Surgical procedure

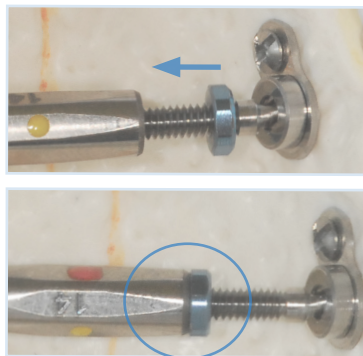


The surgeon must activate the Smile Distractor until the two front teeth have an opening of ± 1 mm. To do this, place the key instrument (IT0414) over the middle part of the distractor body and turn from the front to the back.



IT0414

ACTIVATION



Turn the blocking nut against the module of the distractor using the key instrument (IT0414).

It is important that the blocking nut does not remain in the gums during the surgery.

BLOCKING NUT

Keep in Mind:

A minimum palatal distance of 18,5 mm is necessary to place the smallest Smile EXTRA distractor.

Sequence of the distraction

1. **Surgery:** see above
2. **Activation period:** A week after surgery, the activation of the Smile Distractor is started with the patient key (IT0444). Turn the blocking nut a little backwards so that the module isn't blocked by the nut. Then turn the distractor open until resistance can be felt on the bone and then turn an additional once or twice.

During the activation period (1 to 2 weeks), the patient must turn the module 1/3 of a rotation twice a day; this is about 0.6 mm opening per day. With each turn, a new colour appears.

3. **Consolidation period:** After the activation period, the blocking nut must be tightened with some force. The easiest way to do this is with 2 patient keys: one on the module; and 1 on the locking nut; and then turn them in opposing directions. Leave the distractor in place for a period of 3 to 6 months.

Tip: Patient information available on www.titamed.com.

